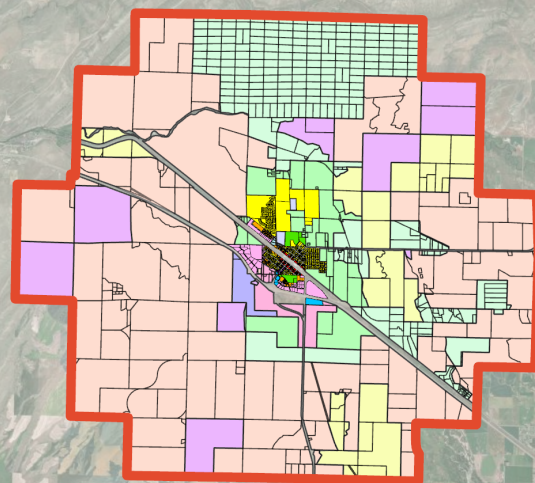


GROWTH POLICY AMENDMENT

The Town of Manhattan is inviting you as a resident of the Planning Jurisdictional Area to share your thoughts on the Growth Policy.



Topics of Discussion



Development Patterns

How has development in Gallatin County, Bozeman, and Belgrade impacted the area?



Potential Zoning

What are the benefits and drawbacks to zoning in the area and its potential impacts?



Impacts to Historical Uses

How can we ensure changes in land use do not impact historical uses of the land?

The Town of Manhattan is creating an amendment to the Growth Policy to address development in the Planning Jurisdictional Area, shown in the map above.

WHAT YOU CAN DO

- ☒ Attend the Open House on February 21st, 2024 at 7 p.m. at 207 N. Sixth St. Manhattan, MT 59741
- ☒ Email manhattanpja@hyaliteeng.com to provide your comments on the project.
- ☒ Take the engagement survey at the link below:
<https://arcg.is/1DziSL0>

QR Code for Survey:



CONTACT US



manhattanpja@hyaliteeng.com



+406-587-2781



2304 N. 7th Ave. Suite L Bozeman, MT 59715



Prepared by Hyalite Engineers PLLC



February 21st, 2024
@ 7 p.m.